

MODEL B

LED INDICATORS

Peg Perego Battery NOT connected

- GREEN LIGHT: the battery charger is working correctly. It's in the socket, ready for operation.

Peg Perego Battery connected

- GREEN LIGHT: the battery is fully charged
- RED LIGHT: the battery is charging

BEFORE CHARGING READ THE INSTRUCTION SHEET

INSTRUCTIONS ON HOW TO USE THE BATTERY CHARGERS WITH AND WITHOUT LEDS FOR LEAD-ACID BATTERY

CHARGING THE BATTERIES

WARNING! Before using the toy, charge the battery for at least 18 hours.

- Plug the battery charger into a power outlet that complies with the specifications on its label
- Connect the battery charger's terminal to the socket in the battery compartment.
- Your battery charger is provided with an LED indicator which means that:
 - When inserted into the socket (see section A) **without any battery**, the green LED will turn on, indicating that the battery charger is working correctly.
 - Connect the battery charger's terminal as explained in section B. If everything is connected correctly and the battery is flat, the red LED will turn on, indicating that the battery is charging. Wait until the battery is fully charged.
 - When the battery is fully charged, the green LED will turn on again.
 - The green LED indicates that the battery is already charged. If during the next use, the battery doesn't last long, contact the customer service to verify whether the battery and battery charger are working properly.
- Once the battery is charged and the LED is steady, disconnect the battery charger from the socket and then remove the battery charger's terminal. The toy is now ready for use.

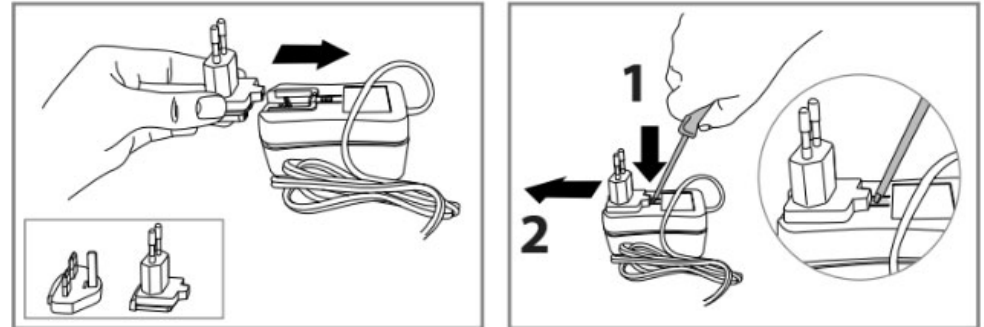
The battery charger is fitted with a safety device which means that in the event of overheating or a short circuit of the battery, a protection system will intervene to prevent current peaks, which could damage the battery charger.

In this case unplug the battery charger from the power outlet, remove the cause of the short circuit and reconnect everything as described in sections A) to C).

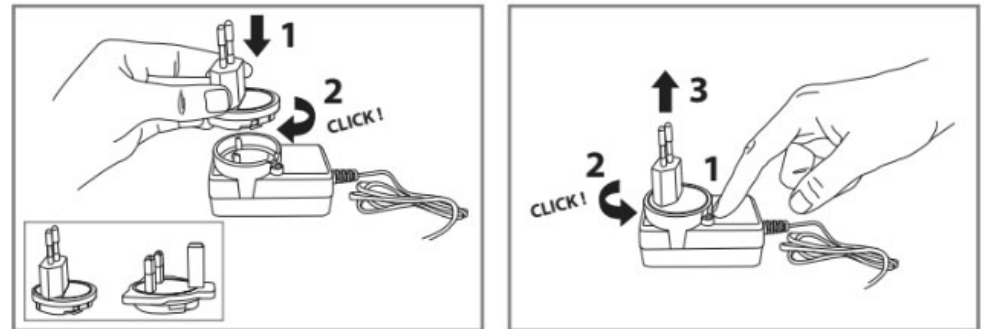
Peg Perego

FI002101G239

MODEL A



MODEL B



ENGLISH

WARNING

1. Insert only lead acid batteries supplied by PEG PEREGO.
2. Do not use with non-rechargeable batteries. **Risk of explosion.**
3. Use of this appliance by children aged 8 years or older, or by persons with reduced physical, sensory or mental abilities, or by persons without the required experience and knowledge, should only occur under supervision or if instructed on the safe use of the appliance in such a way as to understand the risks associated with same. **This is not a toy.** Children should not play with the appliance. Cleaning and maintenance should not be performed by unsupervised children.
4. Do not use with damaged sheathing, cable or connector.
5. Charge the battery only in a well ventilated area.
6. Do not remove the plug by pulling on the cable.
7. Do not drag the vehicle along on its wheels by pulling the battery charger's cable.
8. Avoid overheating the cable by covering it and do not rest it on hot surfaces.
9. Be aware of how the output cable is wound to prevent damaging it.
10. Should the battery charger be damaged, do not use it until it is fully repaired.
11. The product contains some elements that are considered harmful to the environment. Disposal of these elements or of the entire product at the end of its life should be in accordance with the regulations in force in the country where it is used.
12. Before using the battery charger make sure that it is fitted with the specific plug for the country in which it is going to be used.
13. Children should not play with the battery charger as **IT IS NOT A TOY.**



For indoor use only

Operating temperature 0°C - 40°C

MODEL A

LED INDICATORS

Peg Perego Battery NOT connected

• STEADY LIGHT: battery charger is operating when plugged into the power outlet, ready for charging.

Peg Perego Battery connected

• STEADY LIGHT: battery charged
• FLASHING LIGHT: battery loading

BEFORE CHARGING READ THE INSTRUCTION SHEET

INSTRUCTIONS ON HOW TO USE THE BATTERY CHARGERS WITH AND WITHOUT LEDS FOR LEAD-ACID BATTERY

CHARGING THE BATTERIES

WARNING! Before using the toy, charge the battery for at least 18 hours.

- A) Plug the battery charger into a power outlet that complies with the specifications on its label
- B) Connect the terminal on the battery charger to that on the battery, using the appropriate connectors.
- C) Your battery charger is provided with an LED indicator which means that:
 - 1) When plugging in the charger as described in A) **with no battery connected**, the LED will light up to indicate that the device is working correctly.
 - 2) Connect the battery as described in section B). If everything is connected correctly and the battery is flat, the LED will start blinking, indicating that it is charging. Wait until the battery is fully charged.
 - 3) When the battery is fully charged, the LED will stop blinking. A steady LED indicates that the battery is now fully charged.
 - 4) If the battery is already charged, the LED will be steady. If during the next use, the battery doesn't last long, contact the customer service to verify whether the battery and battery charger are working properly.
- D) Once the charge is completed and the LED is on, unplug the battery charger from the mains outlet first, then the battery terminal. Connect the battery to the electrical system of your toy, which is now ready to use.

The battery charger is fitted with a safety device which means that in the event of overheating or a short circuit of the battery, a protection system will intervene to prevent current peaks, which could damage the battery charger.

In this case unplug the battery charger from the power outlet, remove the cause of the short circuit and reconnect everything as described in sections A) to C).