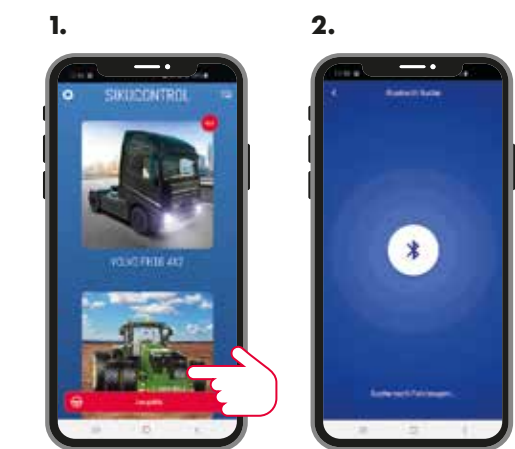


B Systemstart / System start / Démarrage du système / Inicio del sistema / Systeem starten

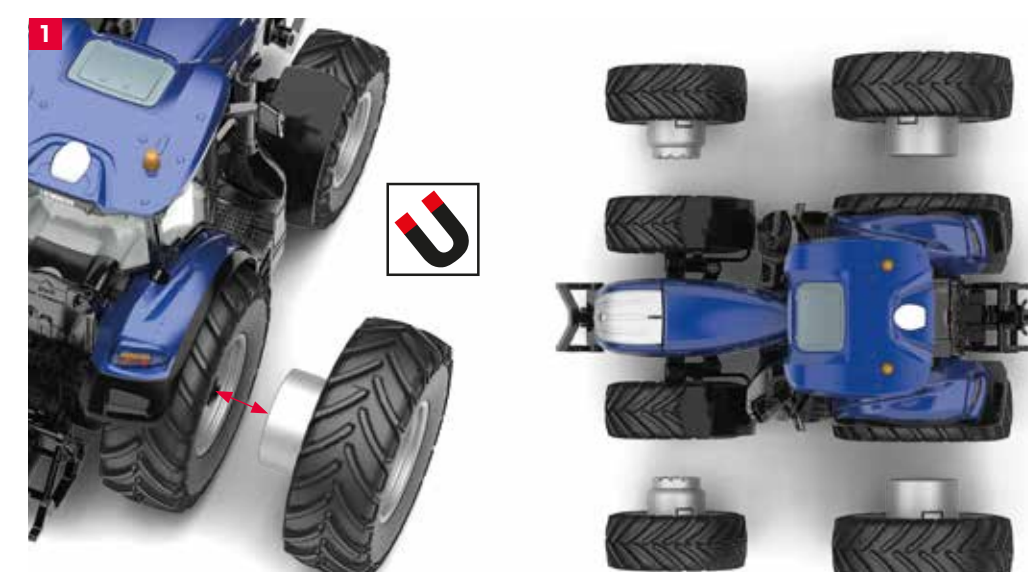
1. Download SIKU**CONTROL**LAPP:

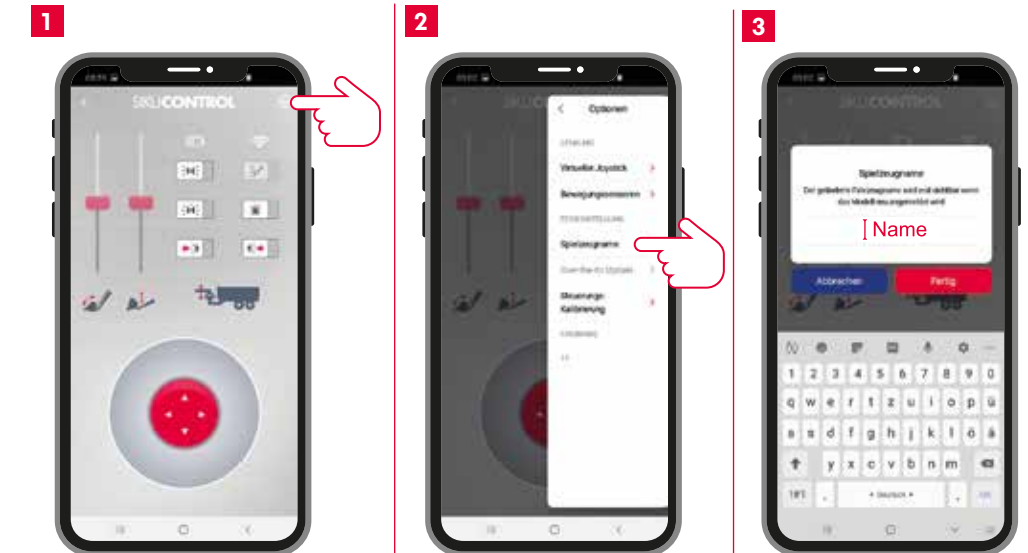
C Systemstart / System start / Démarrage du système / Inicio del sistema / Systeem starten



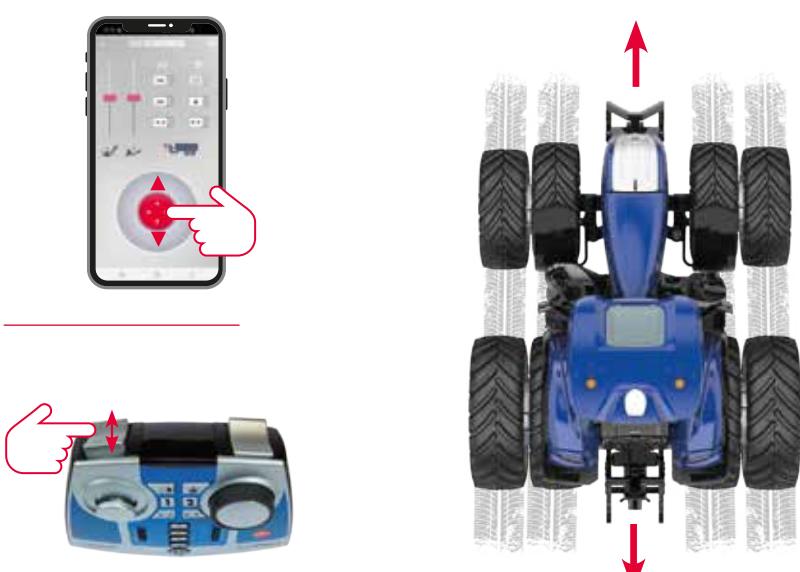
D Doppelreifen montieren / Mounting of twin wheels / Montage des roues jumelées / Montaje de las ruedas gemelas / Dubbele wielen monteren



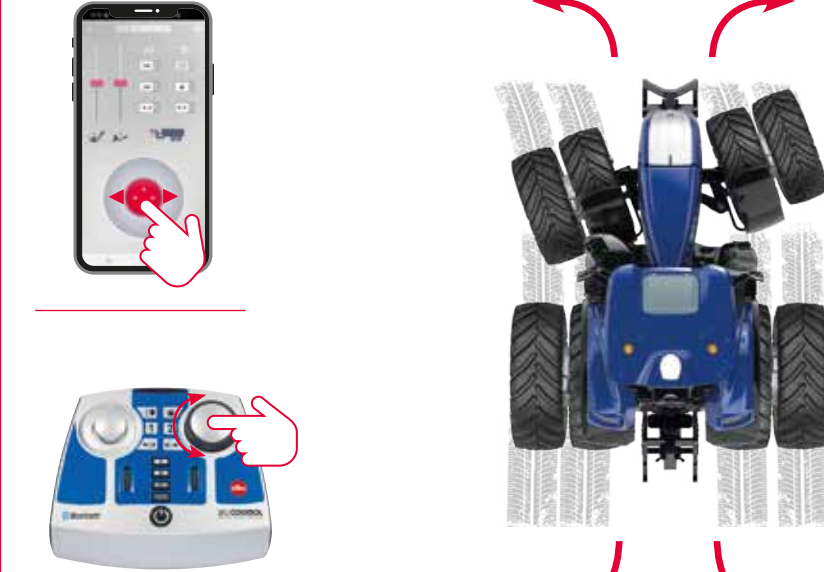
E Eigenen Modellnamen vergeben / Assign your own model name / Attribuer des noms propres aux modèles / Asignar nombres propios a los modelos / Eigen modelnaam geven



F Steuerung / Control / Commande / Control / Besturing



F Steuerung / Control / Commande / Control / Besturing



H automatisch koppeln / Automatic coupling / Attelage automatique / Acoplamiento automático / Automatisch koppelen

